

SET MENU

MONDAY-THURSDAY 12PM-6PM, FRIDAY & SATURDAY 12PM-4PM

1 COURSE FOR £12 / 2 COURSES FOR £15 / 3 COURSES FOR £18

STARTERS

GOAT CHEESE BON BONS (V)

FENNEL, WATERCRESS, GRAPEFRUIT,
WALNUTS, CITRUS VINAIGRETTE

PULLED PORK CROQUETTES

APPLE COMPOTE, SCRATCHINGS

SMOKED MACKEREL RILLETTES

CUCUMBER CARPACCIO, CHIVE
EMULSION, SOURDOUGH TUILE

MAINS

CRISPY SKIN CHICKEN

SWEET POTATO & CHORIZO GNOCCHI,
BLANCHED ASPARAGUS, BÉARNAISE

GRILLED SALMON

DILL MASH POTATO, SEA VEGETABLES,
CREAMY WHITE WINE SAUCE

WILD MUSHROOM TAGLIATELLE (V)

HAZELNUT AND PARSLEY PESTO

DESSERTS

ALMOND & SEA SALT CHOCOLATE BROWNIE

CHOCOLATE SAUCE, VANILLA ICE CREAM

ALSTON MESS

MERINGUE, RASPBERRIES, BLACKBERRY COULIS,
CHANTELLE CREAM, VANILLA ICE CREAM

TRIO OF ICE CREAM

STEAK

STEAK FRITES

WITH GARLIC BUTTER

CHOOSE FROM:

227G FLAT IRON

(SERVED MEDIUM RARE OR MEDIUM)

OR

227G D-RUMP

(£3 SUPPLEMENT)

SAUCES

ADD PEPPER SAUCE OR BÉARNAISE FOR £1

STEAK CIABATTA

ROASTED RED PEPPERS AND ONIONS,
HORSERADISH MAYO

2 COURSES & A GIN FOR £15

ENJOY 2 COURSES AND ONE OF THE
FOLLOWING GINS FOR ONLY £15:

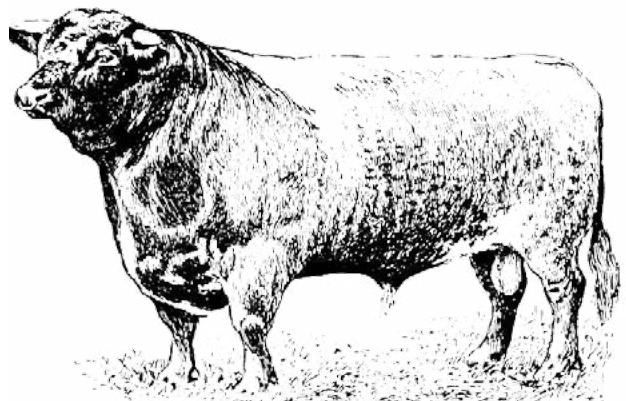
ALSTON RASPBERRY GIN

ALSTON JUNIPER GIN

PEPPERCORN GIN

CHILLI & GINGER GIN

VALID TILL 1ST SEPTEMBER



PLAN
of the City of
GLASGOW.
1783.

ALSTON BAR & BEEF



THE ORIGINAL ALSTON BAR & BEEF IN GLASGOW IS LOCATED NEAR WHERE ALSTON STREET ONCE WAS - A BUSTLING THOROUGHFARE IN GLASGOW THAT WAS DEMOLISHED IN THE MID-1870S TO MAKE WAY FOR CENTRAL STATION. THE STREET RAN NORTH TO SOUTH THROUGH GRAHAMSTON, AN IMPORTANT LOCATION FOR GLASGOW'S GROWING INTERNATIONAL TRADE, PROVIDING PREMISES FOR PROCESSING AND STORING GOODS FOR DESPATCH TO COUNTRIES AROUND THE WORLD.

LIKE GLASGOW, MANCHESTER HAS A STRONG INDUSTRIAL HERITAGE AND THERE ARE MANY SIMILARITIES BETWEEN THE CITIES WHICH MAKE IT THE IDEAL LOCATION FOR THE FIRST ALSTON BAR & BEEF IN ENGLAND. THE HISTORIC CORN EXCHANGE WAS ORIGINALLY CONSTRUCTED ON THIS SITE IN 1837, THE AREA WAS KNOWN AS THE CORN AND PRODUCE EXCHANGE AND WAS A PLACE WHERE FARMERS AND MERCHANTS TRADED CEREAL GRAINS.



ALSTONMANCHESTER.CO.UK

CATHEDRAL ST | THE CORN EXCHANGE | MANCHESTER, M4 3TR
0161 804 5555 | INFO@ALSTONMANCHESTER.CO.UK